









Shreebhagini®



“ THE FUTURE OF FASHION IS HERE...
DRESS UP! YOU NEED TO GO FROM GOOD TO GORGEOUS. ”

D.No.-1161



श्रीवर्धमाने®

“ THIS SEASON FASHION LOOKS TO THE TRENDY STYLISH FIFTIES FOR LADY LIKE DRESSING & GROW UP GLAMOUR IN ELEGANTLY EMBROIDERED DESIGN. BE INSPIRED! ”

D.No:1166





Shree Mangini®
*Glimmering
Miracle*

Shrohanigiri®



*The future of fashion is here first...
Dress up, you need to go from good to gorgeous.*

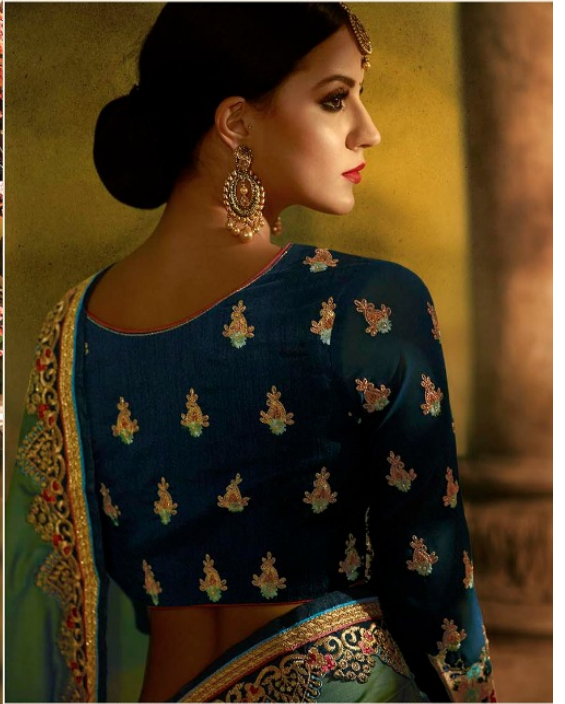
D.No.:1161







Shreehanjali



“ A NEW MAKEOVER THIS SEASON. D.No.-1164 ”



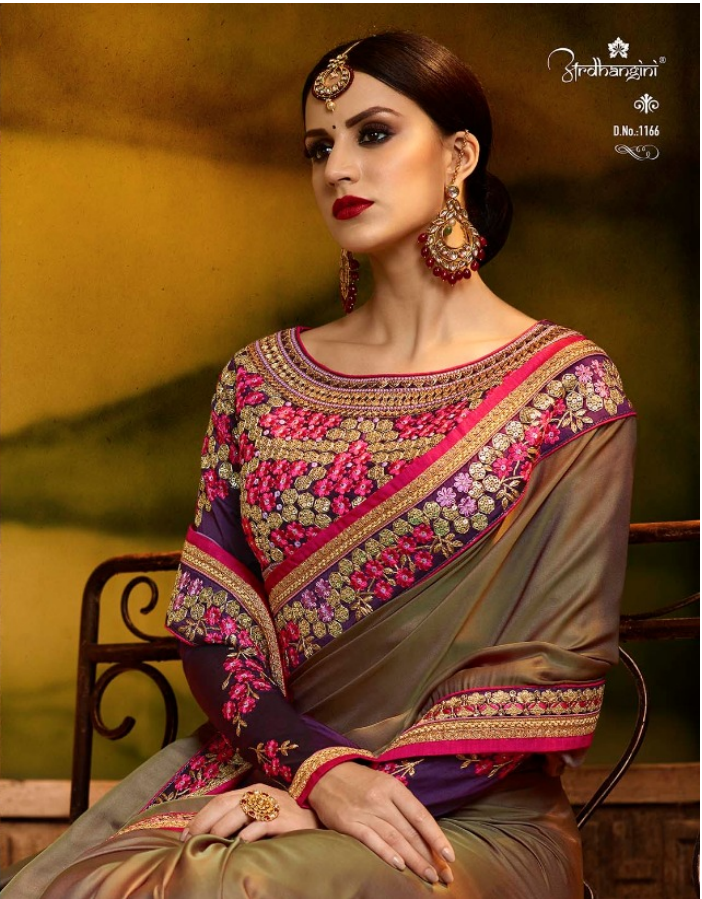
श्रीवहायणी



Fresh crop The season's newest all-in-ones are all set to transform you into the goddess you wish to be.

D.No.1167







श्रीवैभवस्योर्ज

“ SUPER SMILE... SPREAD THE GOOD VIBES OF YOUR
SUPER SMILE IN THE WORLD OF FASHION CLOTHING &
BECOME THE SHOWSTOPPER OF EVERY OCCASION IN YOUR LIFE. ”

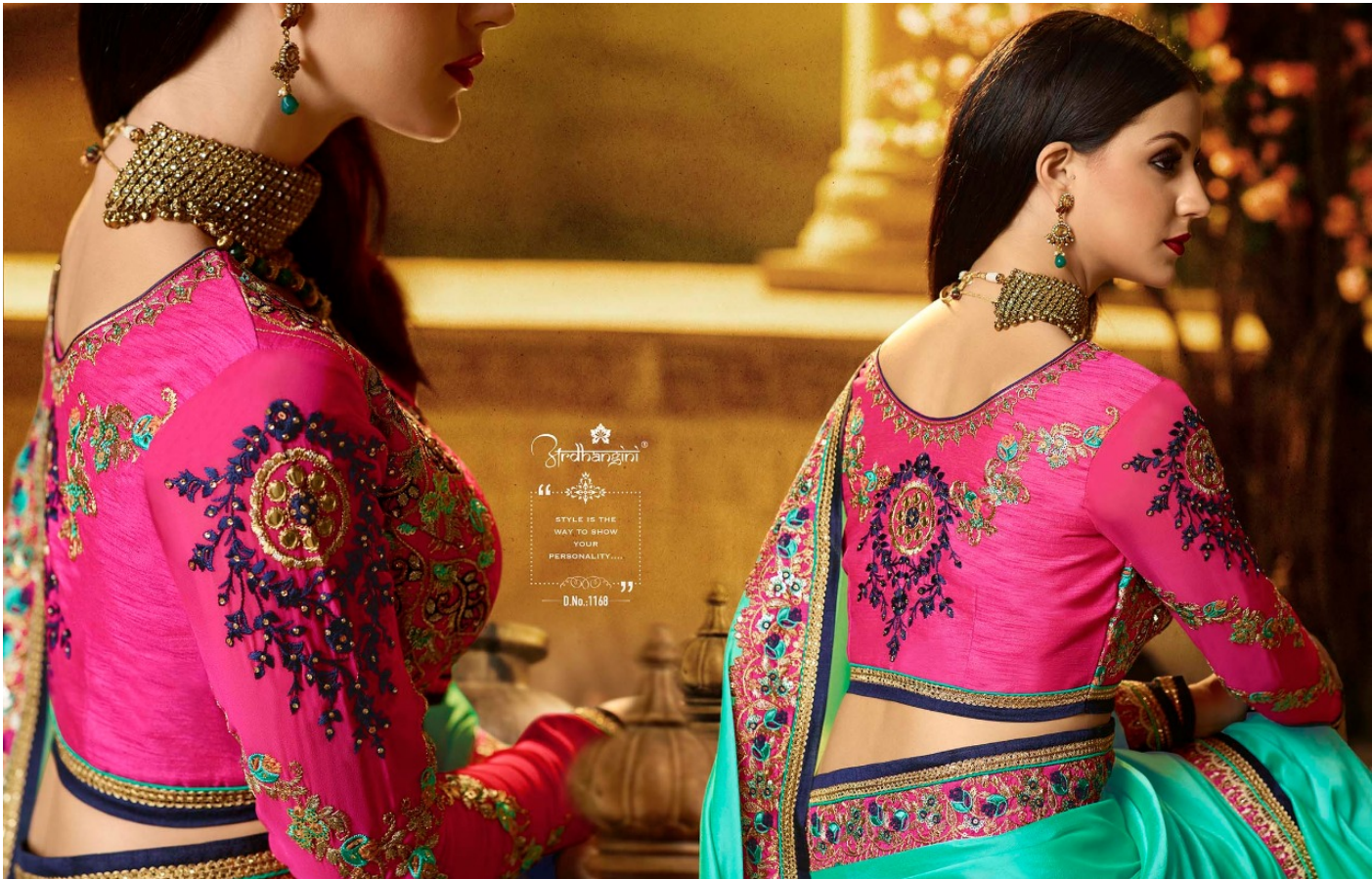
D.No:1165



Sradhanjali®

FRESH CROP THE SEASON'S NEWEST SILHOUETTES ARE ALL SET TO TRANSFORM YOU INTO THE GODDESS YOU WISH TO BE.

D.No. 1167



श्रीवैश्याजी®
“...”
STYLE IS THE
WAY TO SHOW
YOUR
PERSONALITY...
D.No.:1168





Shreeharjiri



“In fashion, from each embroidery to how you fabric is how everything for you.”
Fashion designer, Lakshmi the saree is a masterpiece in saree with her of quality embroidery.

D.No.:1170



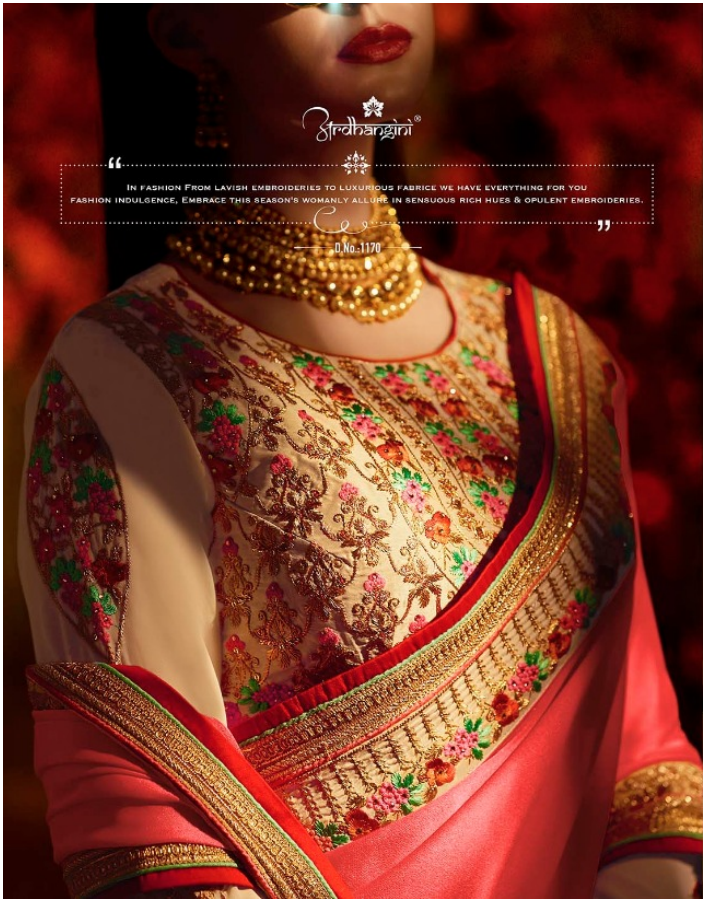


Srotraharini



“ SPARKING GLAMOROUS BEING YOUR STUNNING BEST TO MATCH THE ELEGANCE OCCASION. YOUR STUNNING SIDE THIS SEASON...”

D.No.-1169





1125



1130



1141



1147



1148



1149

.....**SUCCESSFUL** JOURNEY OF

SAKSHI VOL - 01 & 02



Streehanagini®

“ BANG A SPLURGE GET NEW COLLECTION IN YOUR WARDROBE, NOW THE STYLE.
ONE STEP CLOSE TO PERFECTION WEAR YOUR.
DREAMS, YOUR LOOK GETS BETTER DEFINITION WITH JUST A LITTLE ATTENTION TO DETAIL.”

D.No-1171



Shreehanjali



Being a designer, I get more satisfaction in your wardrobe, when the style and the class in perfection meet yours.
— 2 — Dreams, your look gets better, whenever you give a little attention to detail. — 3 —

D.No.:1171

श्रीवैभारिणी



New mood of women There's a new mood for women, and it's full of sophistication, Glamour and seduction womanly charm.

D.No.1172





श्रीदीपारंजनी

“ NEW MOOD OF WOMEN THERE'S A NEW MOOD FOR WOMEN,
AND IT'S FULL OF SENSIBILITY, GLAMOUR AND SEDUCTIVE WOMANLY CHARM. ”

D.No. 1172





1161



1162



1163



1164



1165



1166



1167



1168



1169



1170



1171



1172

Shradhangini®

श्री
VOL-3



DESIGN NO.	FABRICS	WORK	USP
1161	SAREE - RED RANGOLI P*C BLOUSE - CHIKU TAPETA SLEEVES - CHIKU BAMBER	ZARI+BADLA , SEQUENCE WORK WITH MONO COLOUR RESHAM WORK	HEAVY EMBROIDERY BLOUSE & SLEEVES. EMBROIDERY LACE BORDER IN FULLSAREE
1162	SAREE - N.BLUE BARFI SILK BLOUSE - PISTA BANGLORI SLEEVES - PISTA BAMBER	ZARI+BADLA , SEQUENCE WORK WITH MULTI COLOUR CONTRAST RESHAM WORK	CONTRAST COLOR EMBROIDERY BLOUSE & SLEEVES. EMBROIDERY IN FULL SAREE
1163	SAREE - ORANGE RANGOLI P*C BLOUSE - RED BANGLORI & GOLD GOTTA SLEEVES- RED BAMBER	ZARI+BADLA , SEQUENCE WORK WITH MULTI COLOUR WORK	STYLISH PATTERN HEAVY BLOUSE & SLEEVES. EMBROIDERY BORDER IN SAREE
1164	SAREE - PARROT GREEN BARFI C*N SILK BLOUSE - PEACOCK BLUE BANGLORI + GOLD TISSUE, SLEEVES - PEACOCK BLUE BAMBER	ZARI+BADLA , SEQUENCE WORK WITH MULTI COLOUR RESHAM WORK	CONTRAST COLOUR HEAVY EMBROIDERY BLOUSE & SLEEVES. EMBROIDERY BORDER IN SAREE
1165	SAREE - RED RANGOLI P*C BLOUSE - PEACOCK BLUE BANGLORI, SLEEVES - PEACOCK BLUE BAMBER	ZARI+BADLA , SEQUENCE WORK WITH MULTI COLOUR RESHAM WORK	HEAVY EMBROIDERY CONTRAST COLOUR BLOUSE & SLEEVES WITH CONTRAST EMBROIDERY. HEAVY BORDER IN SAREE
1166	SAREE - WINE C*N BLOUSE - DARK WINE TAPETA SLEEVES - DARK WINE BAMBER	ZARI+BADLA , SEQUENCE WORK WITH MULTI COLOUR RESHAM WORK	HEAVY EMBROIDERY BLOUSE & SLEEVES. EMBROIDERY BORDER IN FULL SAREE
1167	SAREE - CHIKU MAGIC SILK BLOUSE - ORANGE BANGLORI, SLEEVES - CHIKU NET	ZARI+BADLA , CODE SEQUENCE WORK WITH RESHAM WORK TOUCH.	HEAVY EMBROIDERY CONTRAST COLOUR BLOUSE & SLEEVES WITH STYLISH NECKLINE. EMBROIDERY BORDER IN FULL SAREE & SHORT PALLU
1168	SAREE-SEA GREEN RANGOLI P*C BLOUSE - RANI BANGLORI SLEEVES - RANI BAMBER	ZARI+BADLA , SEQUENCE WORK WITH MULTI COLOUR RESHAM WORK	HEAVY EMBROIDERY CONTRAST COLOUR BLOUSE & SLEEVES WITH HEAVY EMBROIDERY BORDER IN FULL SAREE
1169	SAREE - BLACK SELF JQD. BLOUSE - RED TAPETA SLEEVES - RED BAMBER	ZARI+BADLA , SEQUENCE WORK WITH MONO COLOUR RESHAM WORK	HEAVY EMBROIDERY CONTRAST COLOUR BLOUSE & SLEEVES WITH CONTRAST EMBROIDERY. HEAVY BORDER IN SAREE
1170	SAREE - PEACH RANGOLI P*C BLOUSE - CHIKU TAPETA SLEEVES - CHIKU BAMBER	ZARI+BADLA , SEQUENCE WORK WITH MULTI COLOUR RESHAM WORK	HEAVY EMBROIDERY BLOUSE & SLEEVES. EMBROIDERY LACE BORDER IN FULLSAREE
1171	SAREE - PISTA MAGIC SILK BLOUSE - BOTTLE GREEN BANGLORI SLEEVES - BOTTLE GREEN BAMBER	ZARI+BADLA , SEQUENCE WORK WITH MULTI COLOUR RESHAM WORK	CONTRAST COLOUR HEAVY EMBROIDERY BLOUSE & SLEEVES. EMBROIDERY BORDER IN SAREE
1172	SAREE - BROWN BARFI C*N BLOUSE - TOMATO BANGLORI SLEEVES - TOMATO BAMBER	ZARI+BADLA , SEQUENCE WORK WITH RESHAMWORK	HEAVY EMBROIDERY BLOUSE & SLEEVES EMBROIDERY BORDER IN FULL SAREE

