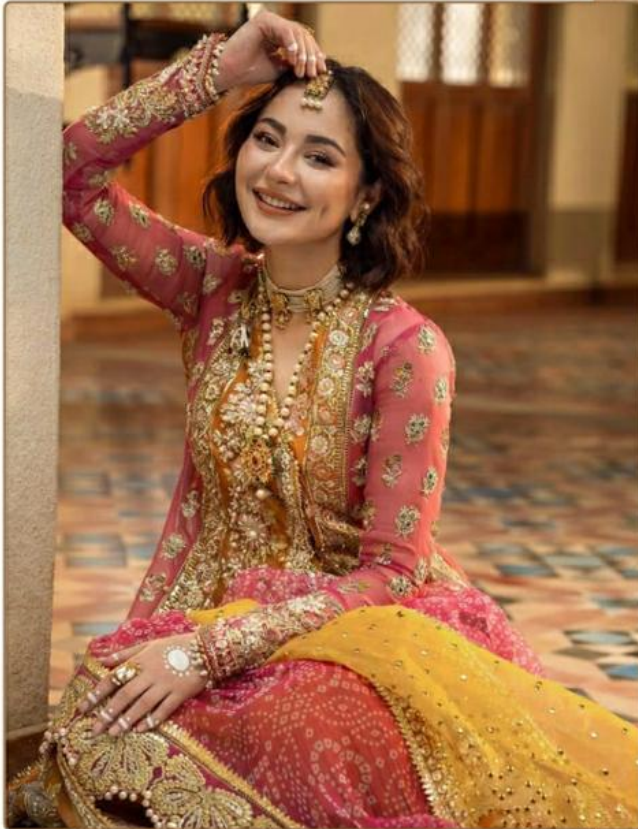




#R-548



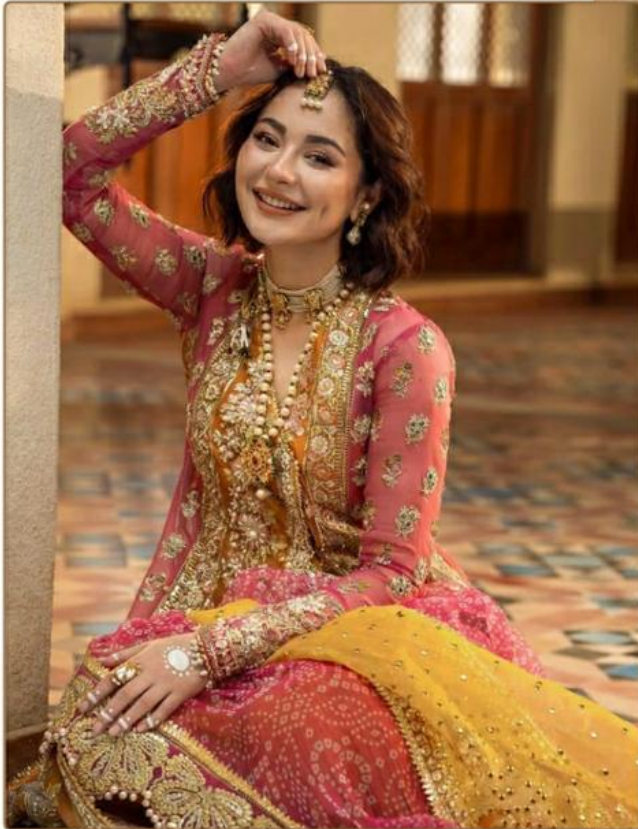
TOP- ORGENZA WORK WITH EMBROIDERY  
BOTTOM-DULL SANTOON  
DUPATTA - ORGENZA WORK WITH EMBROIDERY

Ⓟ DRY CLEAN ONLY.  
ⓧ DO NOT USE ANY BLEACH OR STAIN REMOVING CHEMICAL.  
☎ IRON THE FABRIC AT MODERATE TEMPERATURE.



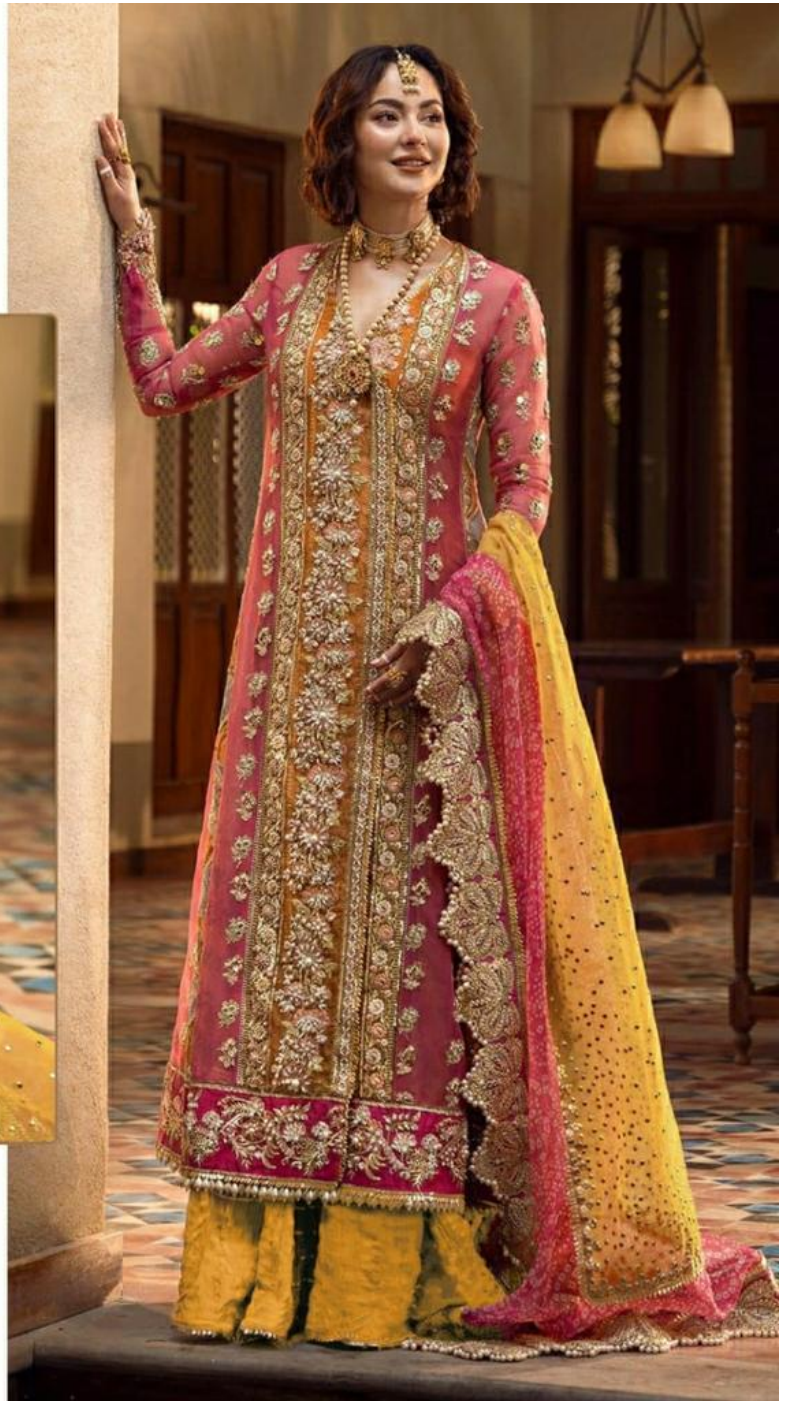


#R-548



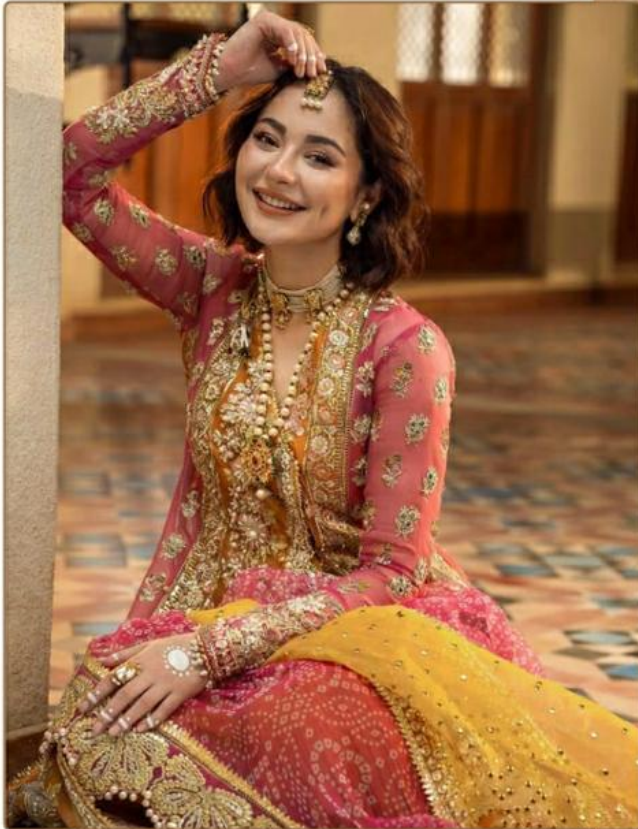
TOP- ORGENZA WORK WITH EMBROIDERY  
BOTTOM-DULL SANTOON  
DUPATTA - ORGENZA WORK WITH EMBROIDERY

Ⓟ DRY CLEAN ONLY.  
ⓧ DO NOT USE ANY BLEACH OR STAIN REMOVING CHEMICAL.  
☎ IRON THE FABRIC AT MODERATE TEMPERATURE.



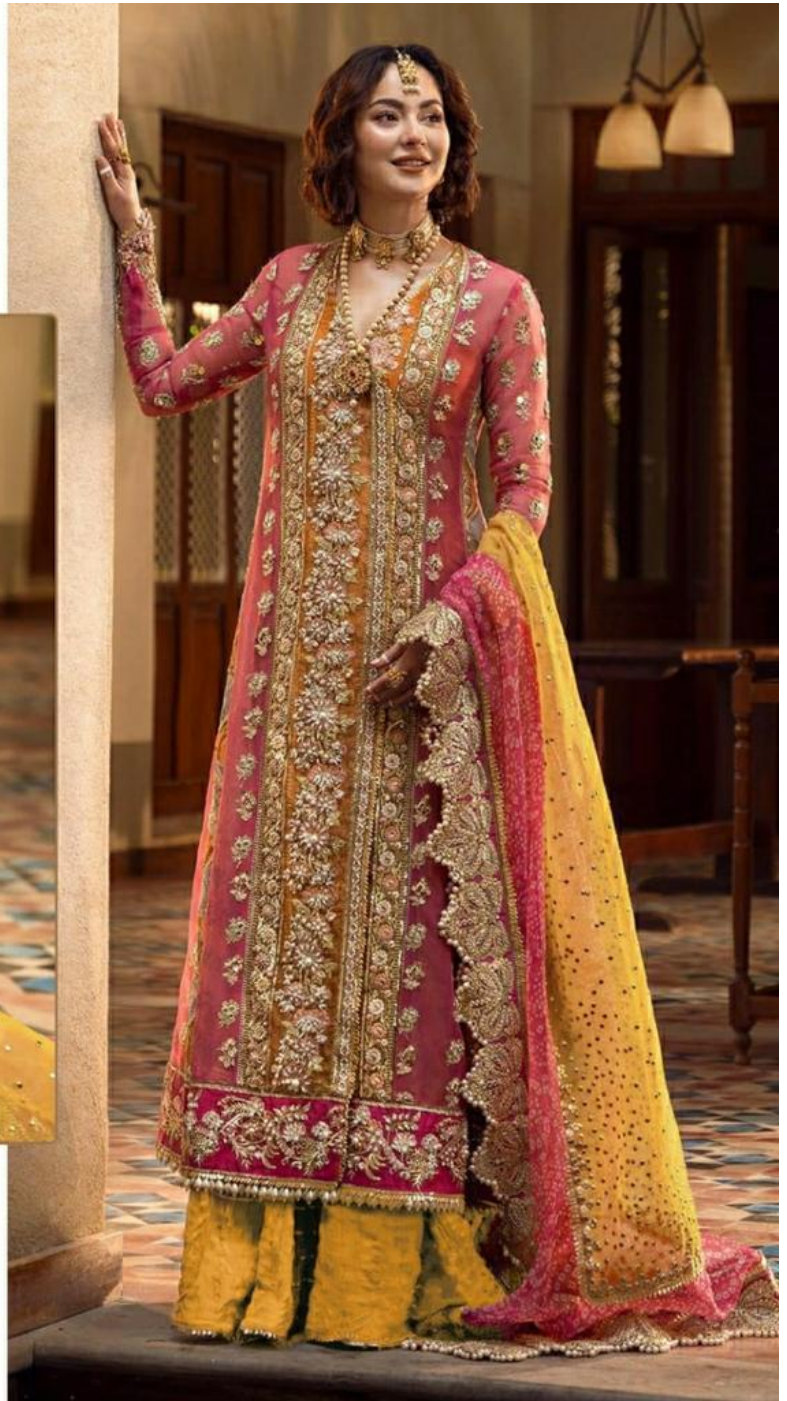


#R-548



TOP- ORGENZA WORK WITH EMBROIDERY  
BOTTOM-DULL SANTOON  
DUPATTA - ORGENZA WORK WITH EMBROIDERY

Ⓟ DRY CLEAN ONLY.  
ⓧ DO NOT USE ANY BLEACH OR STAIN REMOVING CHEMICAL.  
☎ IRON THE FABRIC AT MODERATE TEMPERATURE.

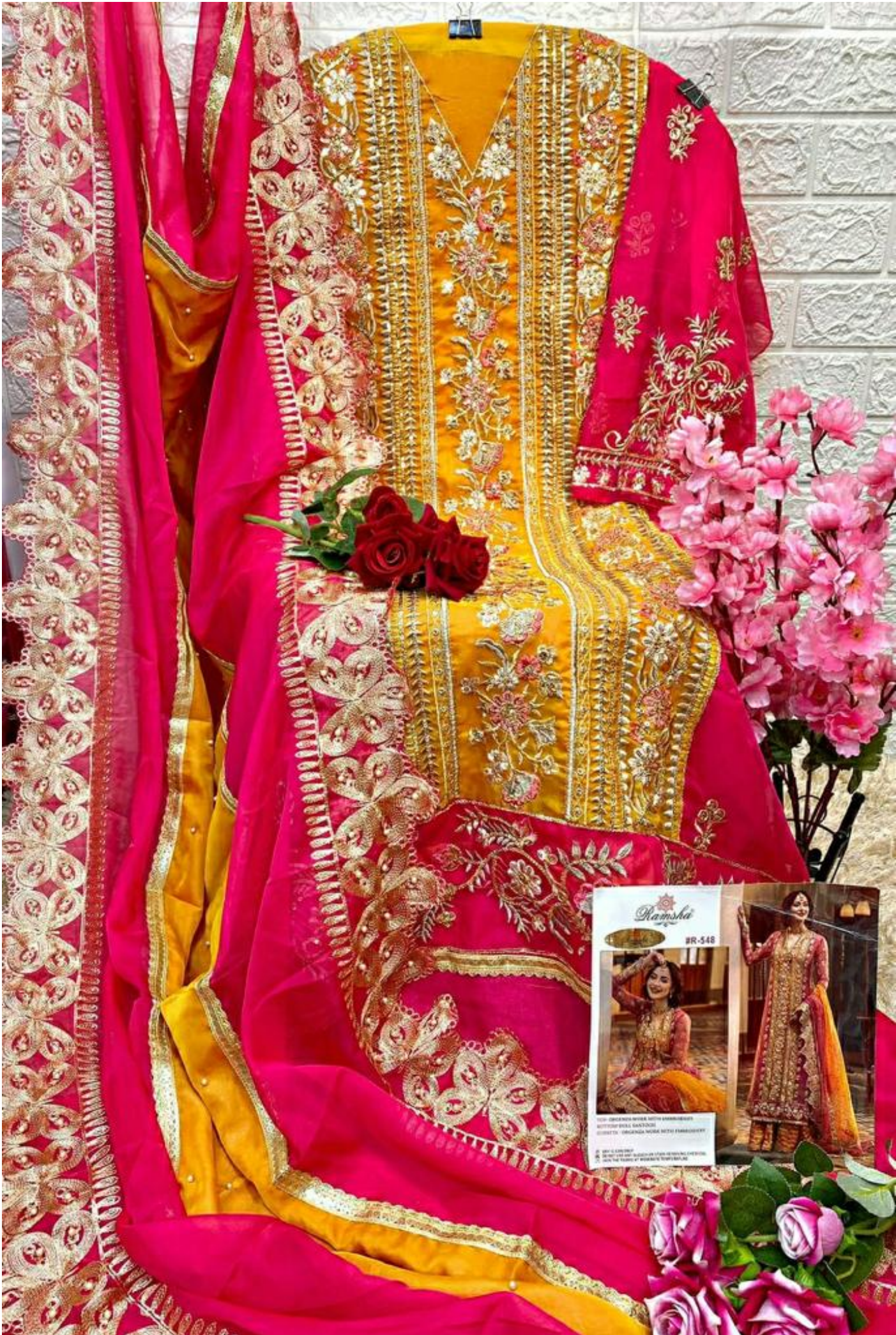




**Ramsha**  
#R-548

TOP - CINCINCA WORK WITH EMBROIDERY  
BOTTOM - SHELL SUTTERIN  
SHAWL - CINCINCA WORK WITH EMBROIDERY

WASH IN COLD WATER  
DO NOT USE DRY CLEANING  
IRON THE GARMENT AT MEDIUM TEMPERATURE



*Kamsha*

₹48

100% ORGANIC NON WOVEN WITH EMBROIDERY  
 BOUTIQUE WASH HANDLING  
 SUITABLE ORGANIC NON WOVEN WITH EMBROIDERY

© 2017 KAMSHA  
 WE DON'T USE ANY HARMFUL CHEMICALS IN OUR FABRICS  
 WITH THE FAITH OF ORGANIC FIBRE