

FLORY

VOL-26

शुभकला bhkala



FLORY

VOL-26

शुभकला bhkala





शुभकला bhkala

With its richly embroidered bodice and skirt, this gorgeous gown comes perfectly in tune with the festive season.

4811

4817
bhkala

*We have embraced the colour of nature in our
series this spring. A palette never seen in a dress is the eye and a perfect
drapes for the summer wedding.*



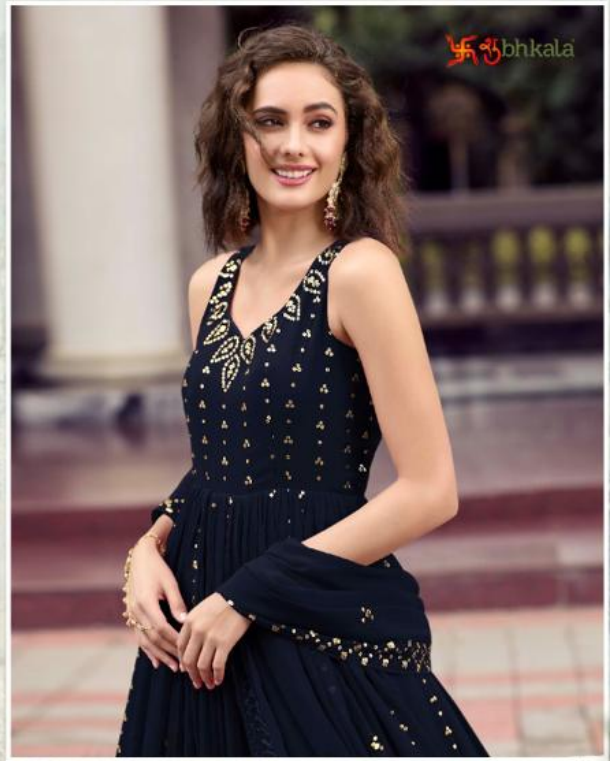


शुभकला

When you wish to rise an altar,
that is manmade yet divine,
nothing comes
closer to a natural perfect deity.

4814





With its rich, individualized border and details, this gorgeous gown comes perfectly tailored to the feminine silhouette.

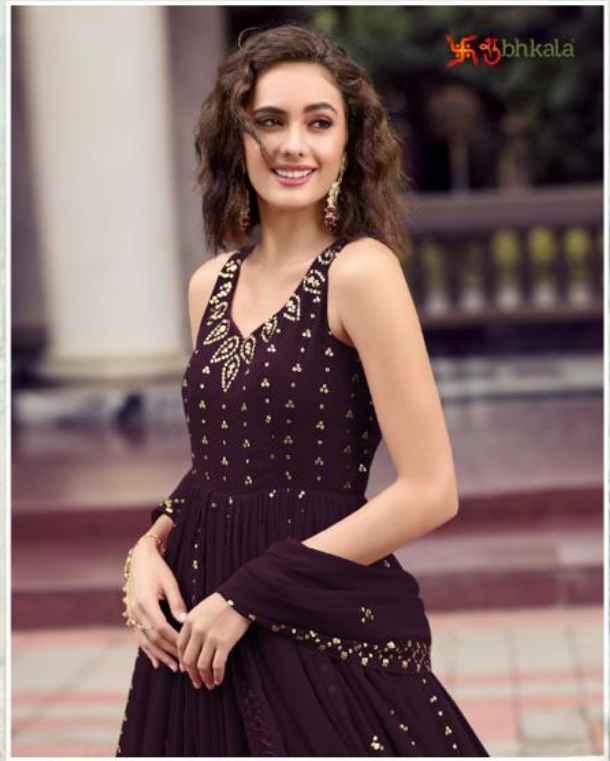
4817

bhkala



*An eye has opened all seven gates of
heaven which are controlled by a star. The flower is a two-jawed bird.*

4814



Mix of rich individual border and motifs, this gorgeous gown comes perfectly enhance the feminine silhouette.

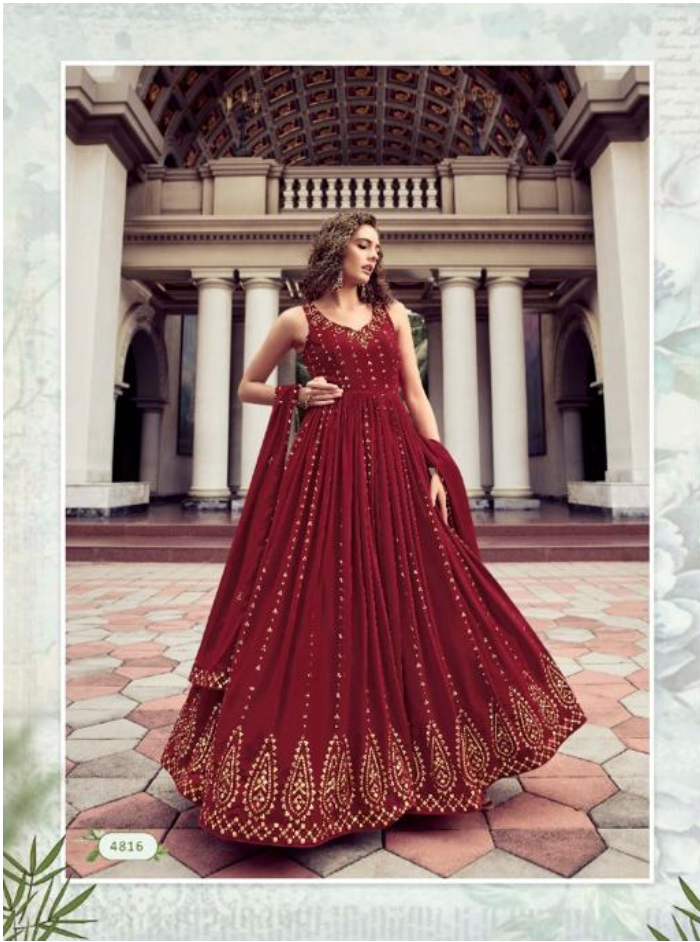
4815



bhkala

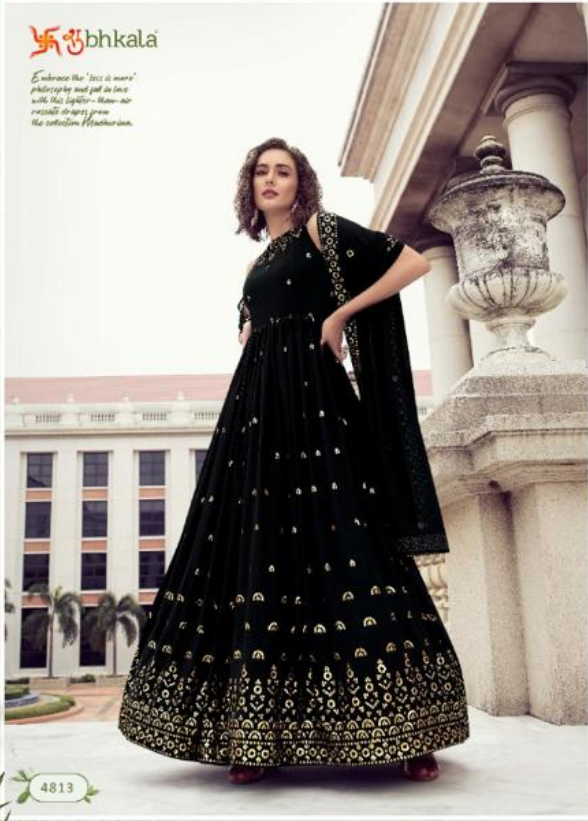
*With its rocky undulating border
and facets, this gorgeous green saree perfectly
enhances the feminine silhouette.*

4811



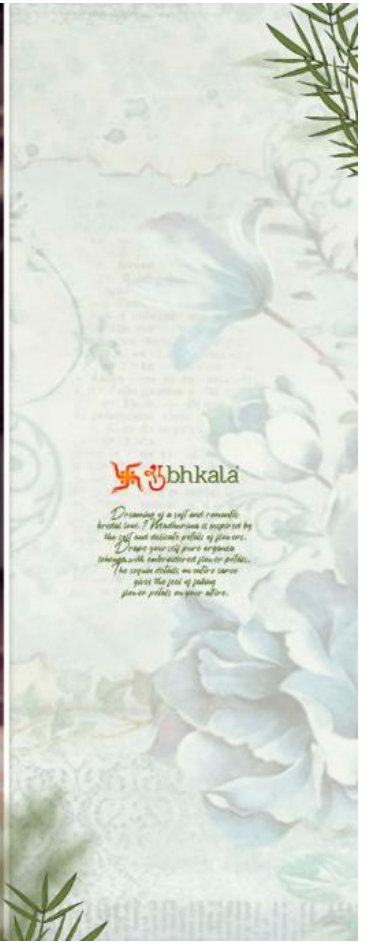
 bhkala

Embrace the 'less is more' philosophy and put it into style with this lighter-than-air, casual dress from the collection.



4813





FLORY

VOL-26

शुभकला bhkala





4811



4812



4815



4816



4813



4814



4817

शुभकला
FLORY
VOL. 26

FLORY

VOL-26

Design NO. (SKU)	Gown & Inner Color	Dupatta Color	Gown Fabric	Dupatta Fabric	Inner Fabric	Gown & Dupatta Work	SIZE (SEMI - STITCHED)	Top Length INCH	Inner Length MTR	Dupatta Length
4811	Green	Green	Georgette	Georgette	Silk Crepe	Thread And Sequince Embroidered Work	Semi Stitched (Customized from 34 to 46)	58	3	2.30 MTR
4812	Rama	Rama	Georgette	Georgette	Silk Crepe	Thread And Sequince Embroidered Work	Semi Stitched (Customized from 34 to 46)	58	3	2.30 MTR
4813	Black	Black	Georgette	Georgette	Silk Crepe	Thread And Sequince Embroidered Work	Semi Stitched (Customized from 34 to 46)	58	3	2.30 MTR
4814	Rani	Rani	Georgette	Georgette	Silk Crepe	Thread And Sequince Embroidered Work	Semi Stitched (Customized from 34 to 46)	58	3	2.30 MTR
4815	Purple	Purple	Georgette	Georgette	Silk Crepe	Thread And Sequince Embroidered Work	Semi Stitched (Customized from 34 to 46)	58	3	2.30 MTR
4816	Maroon	Maroon	Georgette	Georgette	Silk Crepe	Thread And Sequince Embroidered Work	Semi Stitched (Customized from 34 to 46)	58	3	2.30 MTR
4817	Dark Blue	Dark Blue	Georgette	Georgette	Silk Crepe	Thread And Sequince Embroidered Work	Semi Stitched (Customized from 34 to 46)	58	3	2.30 MTR

CAN-CAN NOT AVAILABLE. • FULL STITCHING AVAILABLE.

GOWN WEIGHT: 1 KG

THIS BOOK / CATALOGUE / LOGO / ARE PROTECTED UNDER COPYRIGHT ACT.
AN ILLEGAL/UNAUTHORIZED REPRINT, PUBLISHING, REPRODUCTION, DISTRIBUTION AND MODIFICATION OF ANY IMAGES, PHOTOGRAPHS AND PRODUCTCS, TOTALLY OR IN PART, FOR ANY PURPOSE, REASON OR CAUSE IS STRICTLY PROHIBITED AND PUNISHABLE UNDER LAW.