



FABRICS DETAILS

TOP:-PURE CHINNON

BOTTOM:-PURE COTTON SARTIN STREACHABLE

SIZE:-XXL



CARE INSTRUCTIONS

DRY CLEAN RECOMMENDED
DO NOT USE ANY TYPE OF BLEACH OR STAIN REMOVING CHEMICALS
WASH & SOAK COLORED & WHITE FABRICS SEPARATELY
DO NOT OVER EXPOSE DAMP FABRIC TO STRONG SUNLIGHT
IRON AT MODERATE TEMPERATURE






LAIBA
AM VOL-155



FABRICS DETAILS

TOP:-PURE CHINNON

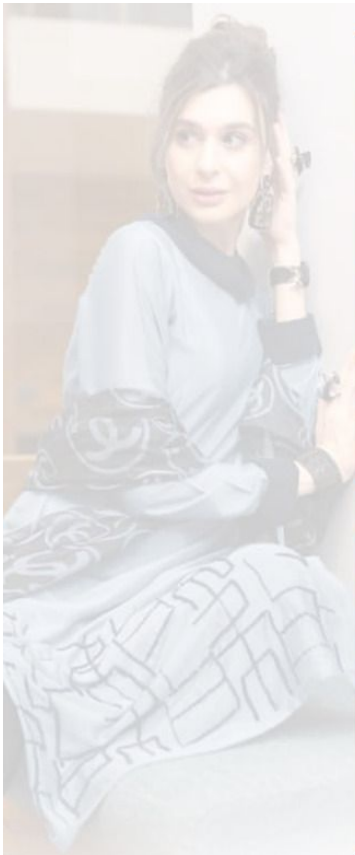
BOTTOM:-PURE COTTON SARTIN STREACHABLE

SIZE:-XXL



CARE INSTRUCTIONS

DRY CLEAN RECOMMENDED
DO NOT USE ANY TYPE OF BLEACH OR STAIN REMOVING CHEMICALS
WASH & SOAK COLORED & WHITE FABRICS SEPARATELY
DO NOT OVER EXPOSE DAMP FABRIC TO STRONG SUNLIGHT
IRON AT MODERATE TEMPERATURE



FABRICS DETAILS

TOP:-PURE CHINNON

BOTTOM:-PURE COTTON SARTIN STREACHABLE

SIZE:-XL



CARE INSTRUCTIONS

DRY CLEAN RECOMMENDED
DO NOT USE ANY TYPE OF BLEACH OR STAIN REMOVING CHEMICALS
WASH & SOAK COLORED & WHITE FABRICS SEPARATELY
DO NOT OVER EXPOSE DAMP FABRIC TO STRONG SUNLIGHT
IRON AT MODERATE TEMPERATURE




LAIBA
AM VOL-155




LAIBA
AM VOL-155



FABRICS DETAILS

TOP:-PURE CHINNON

BOTTOM:-PURE COTTON SARTIN STREACHABLE

SIZE:-XXL



CARE INSTRUCTIONS

DRY CLEAN RECOMMENDED
DO NOT USE ANY TYPE OF BLEACH OR STAIN REMOVING CHEMICALS
WASH & SOAK COLORED & WHITE FABRICS SEPARATELY
DO NOT OVER EXPOSE DAMP FABRIC TO STRONG SUNLIGHT
IRON AT MODERATE TEMPERATURE