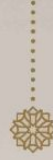




Abhikala

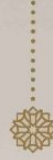


Guldasta

vol. 13



Abhikala



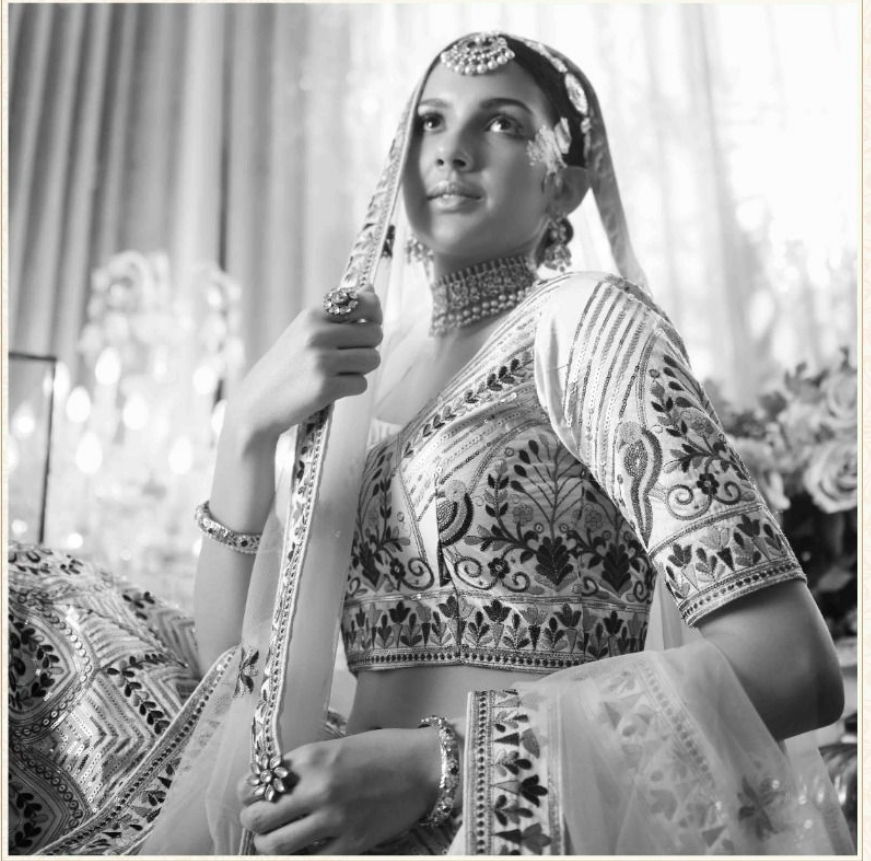
Guldasta

vol. 13

शुभकला



THIS BOOK / CATALOGUE / LOGO / ARE PROTECTED UNDER COPYRIGHT ACT.
AN ILLEGA/UNAUTHORIZED REPRINT, PUBLISHING, REPRODUCTION, DISTRIBUTION AND
MODIFICATION OF ANY IMAGES, PHOTOGRAPHS AND PRODUCTS, TOTALLY OR IN PART,
FOR ANY PURPOSE, REASON OR CAUSE IS STRICTLY PROHIBITED AND PUNISHABLE UNDER LAW.





Design NO. (SKU)	Color	Lehenga Fabric	Choli Fabric	Dupatta Fabric	Size (Semi-Stitched)	Lehenga & Belt Work	Choli Work	Dupatta Work	Choli Length	Lehenga Length	Dupatta Length	Weight
	Lehenga – Choli – Dupatta								(UN-STITCHED) MTR	(SEMI-STITCHED) MTR	MTR	
2141	Teal Blue	Silk	Silk	NET	UPTO 42 BUST AND WAIST	Thread With Sequince Embroidered Work	Thread With Sequince Embroidered Work	Thread With Sequince Embroidered Work	1 MTR	42 INCH	2.40 MTR	2.5 KG
2142	White – Green – White	Silk	Silk	NET	UPTO 42 BUST AND WAIST	Thread With Sequince Embroidered Work	Thread With Sequince Embroidered Work	Thread With Sequince Embroidered Work	1 MTR	42 INCH	2.40 MTR	2.5 KG
2143	Violet	Silk	Silk	NET	UPTO 42 BUST AND WAIST	Thread With Sequince Embroidered Work	Thread With Sequince Embroidered Work	Thread With Sequince Embroidered Work	1 MTR	42 INCH	2.40 MTR	2.5 KG
2144	Peach	Silk	Silk	NET	UPTO 42 BUST AND WAIST	Thread With Sequince Embroidered Work	Thread With Sequince Embroidered Work	Thread With Sequince Embroidered Work	1 MTR	42 INCH	2.40 MTR	2.5 KG
2145	Deep Pink	Silk	Silk	NET	UPTO 42 BUST AND WAIST	Thread With Sequince Embroidered Work	Thread With Sequince Embroidered Work	Thread With Sequince Embroidered Work	1 MTR	42 INCH	2.40 MTR	2.5 KG
2146	White – Deep Pink	Silk	Silk	Silk	UPTO 42 BUST AND WAIST	Thread With Sequince Embroidered Work	Thread With Sequince Embroidered Work	Thread With Sequince Embroidered Work	1 MTR	42 INCH	2.40 MTR	2.5 KG
2147	Dusty – Purple	Silk	Silk	Silk	UPTO 42 BUST AND WAIST	Thread With Sequince Embroidered Work	Thread With Sequince Embroidered Work	Thread With Sequince Embroidered Work	1 MTR	42 INCH	2.40 MTR	2.5 KG

THIS BOOK / CATALOGUE / LOGO / ARE PROTECTED UNDER COPYRIGHT ACT.

AN INLEGAL/UNAUTHORIZED REPRINT, PUBLISHING, REPRODUCTION, DISTRIBUTION AND MODIFICATION OF ANY IMAGES, PHOTOGRAPHS AND PRODUCTCS, TOTALLY OR IN PART, FOR ANY PURPOSE, REASON OR CAUSE IS STRICTLY PROHIBITED AND PUNISHABLE UNDER LAW.



2141



2142



2145



2146



2143



2144



2147





A true designer creates their identity in the language
of colors and textures. Whether it's for the top
end of the market or the low end, it's important to
understand that products are not just about
the right amount of time.



शुभकला bhkala

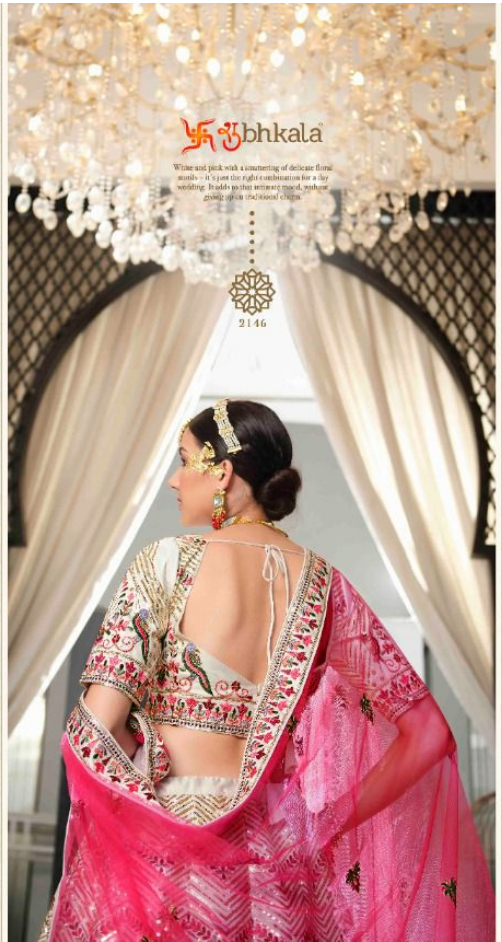
शुभकला

The subtle aura of Blush Pink Ombre meets the precision of intricate floral motifs woven with traditional crafting techniques. The resulting silhouette is a dance of visual poetry – regal and carefree.



2144





ॐ bhkala

White and pink with a scattering of delicate floral motifs - it's just the right combination for a big wedding. It adds to the vibrant mood, without going over on the blood-candy.



2146

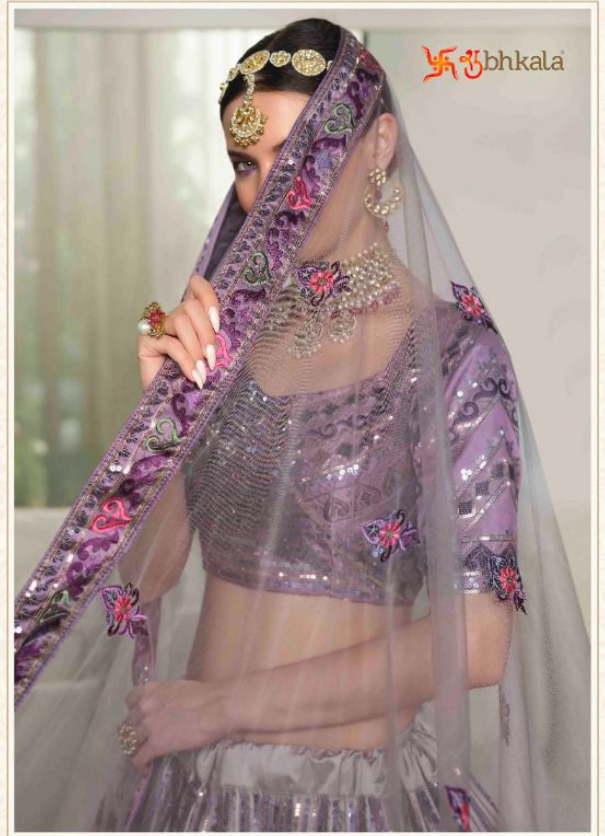




❧ bhkala



2147
Lash bhala, parsi kasa, band naivara; duni ching we're in love with!
There is the world can figure it, of them, regularly.





शुभकला



2142

A hint of fresh air comes alive in the folds of this green ensemble, while the intricate hand-woven embroidery brings to life the glory and cultural mastery of the miniature paintings.





ॐ bhkala



2142

A hint of diva in every step in the form of this green ensemble, while the intricately handwoven embroidery brings to life the glory and vibrant history of our heritage garments.





शुभकला



2145

Brought to life by some of the best we can
bravest in India. This outfit is one of our
favorites because there's something so
elegant and timeless about the
colour palette and the subtle work!





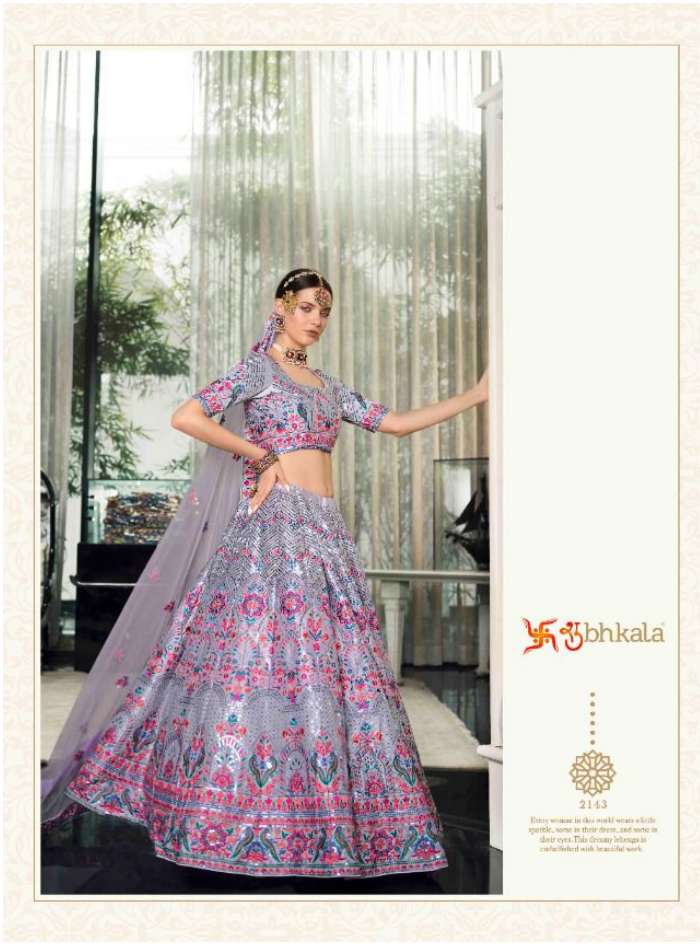
bhkala

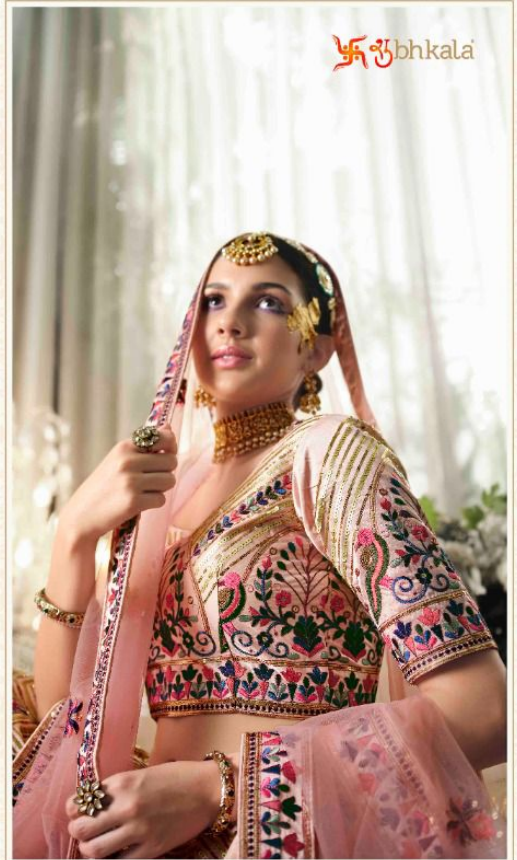


2145

Enough to fill the eyes of the beholder
yet breathable fabric. This outfit is
one of our favorites because
there's something so exciting
and liberating about the colour
palette and the subtle work.







शुभकला



2144

The subtle art of Shikhi Pink
Chiffon weaves the promises of
eternity from needle work
with traditional cutting techniques.
The resulting silhouette is sheer & light
poetry – *maghi aur eesavagun.*





Swastika bhkala



2141

This royal blue ensemble to see the exuberance of Indian culture entwined with the royal adornment
Artistically executed intricate embroidery makes it really unique.

