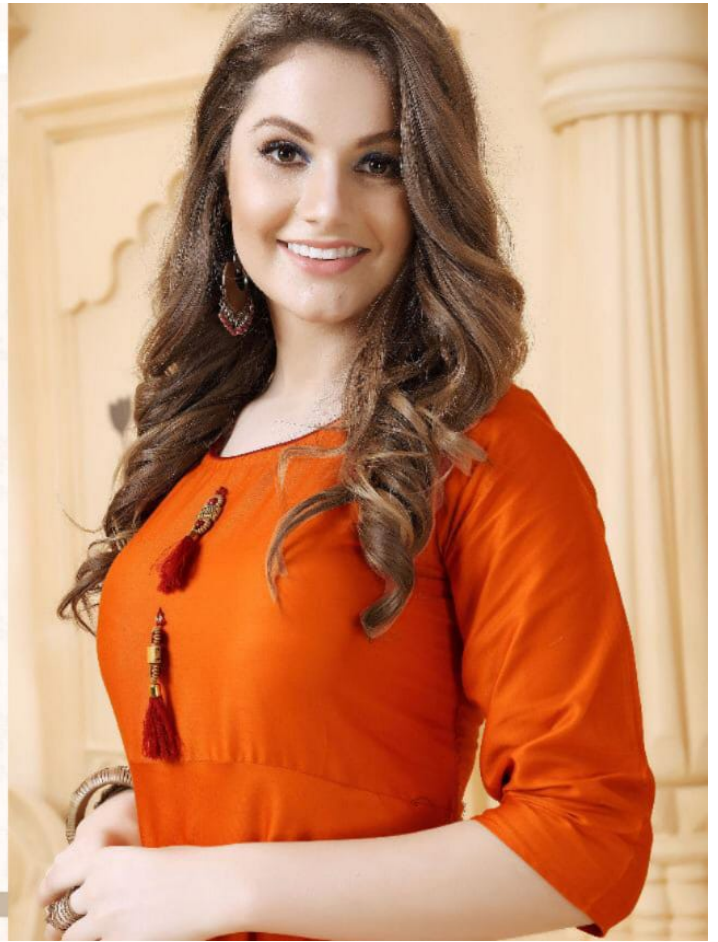


|| ALLURING ||



The exotism of the east lends itself to this elegant number.
This dress will be the season's absolute must have.

1006







You enfold
 your hands in
 welcome. All
 who stand
 before you are
 only too glad to
 welcome you
 into their lives.
 Because as you
 enter their
 lives, there is an
 influx of radi-
 ant beauty,
 endless joy,
 endless joy,
 endless glory
 and endless
 grace. Clad in
 your sari, you
 are the apex of
 awe.



Mango

You enfold your hands in welcome. All who stand before you are only to glad to welcome you into their lives. Because as you enter their lives, there is an influx of endless beauty, endless joy, endless glory and endless grace.

1004







||GRACIOUS||



Intricate Patterns
Bring out your inner diva with this chic and stylish collection of designs based on highly intricate patterns.

1005





KERSOM
Mango



1008

||STATUESQUE||



1002

Wear clothing in simple designs. The color red brings more confidence, primarily in vibrant reds.

||FINESPUN||



A beautiful kurta and a collection of exotic fabrics
perfect suitable to create an exotic Kersom collection

1001

KERSOM
KURTI
Mango





You enfold your hands in welcome. All who stand before you are only to glad to welcome you into their lives. Because as you enter their lives, there is an influx of endless beauty, endless joy, endless joy, endless glory and endless grace. Clad in your sari, you are the apex of awe.

|| DIVINE ||



Experience subtlety in its true form with this crafty rendition
of nature's first flag as the new season walks in.

1003







You enfold
 your hands in
 welcome. All
 who stand
 before you are
 only too glad to
 welcome you
 into their lives.
 Because as you
 enter their
 lives, there is an
 influx of radi-
 ant beauty,
 endless joy,
 endless joy,
 endless glory
 and endless
 grace. Clad in
 your sari, you
 are the apex of
 awe.