

6053

HER AESTHETICS IS DOPE; SHE IS ALL SORTS
—OF STOP AND STARE—





A Product by **Sheetal** Group
SAREES

M - 3693-3694, MILLENIUM TEXTILE MARKET,
RING ROAD, SURAT - 395002

CONTACT US: +91 98251 49490, 98251 12122

COMPLIMENTARY COPY - NOT FOR SALE



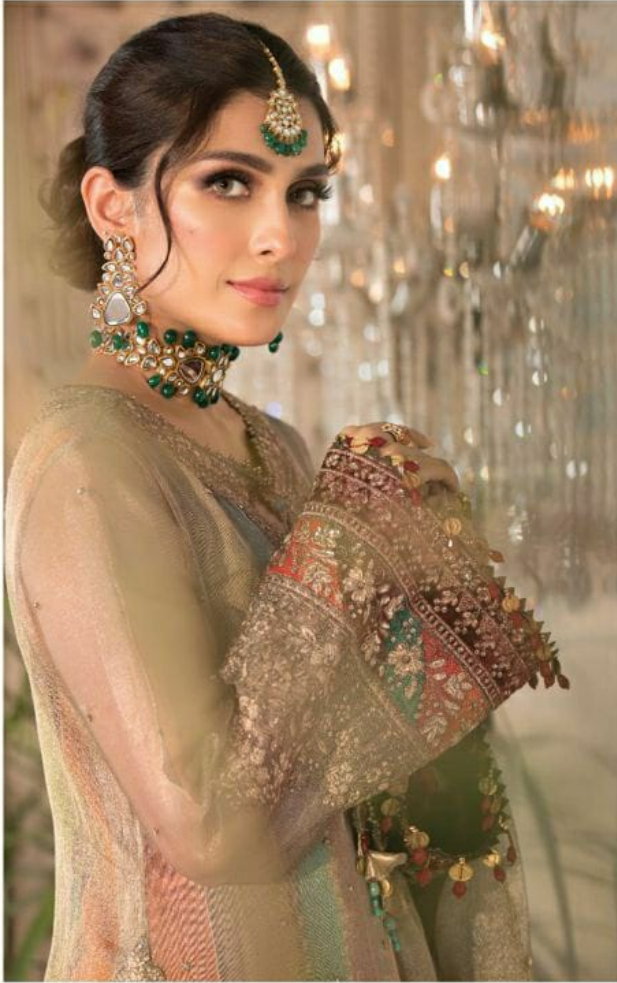
JYOTI SILK

SHE IS THE SOURCE OF
— ETERNAL GLEE —



6052

Eepic®

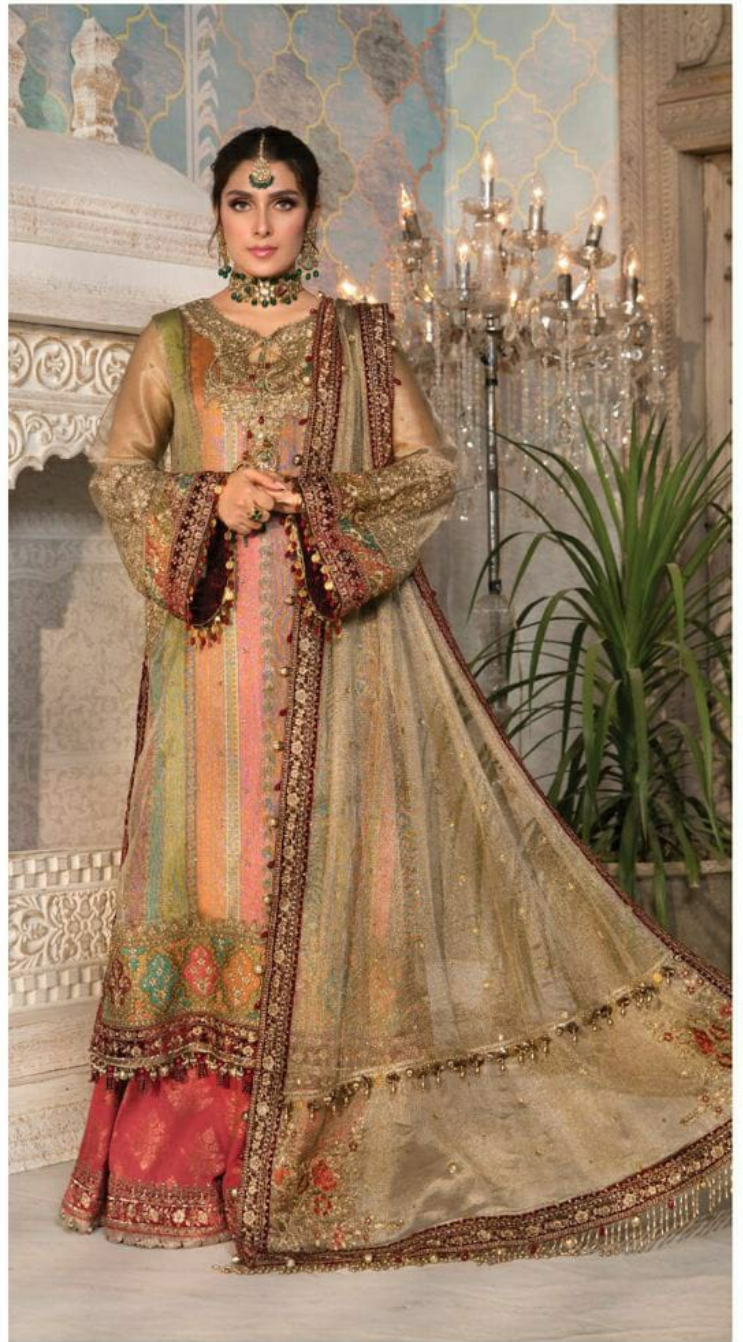


WASHING INTRUCTIONS

DO NOT USE ANY TYPE OF BLEACH OR STAIN REMOVING CHEMICALS
BEFORE CUTTING / STITCHING, FABRIC SHOULD BE SOAKED BE SOAKED IN WATER
(ALL COMPONENTS SEPARATELY) FOR 15 MINUTES
DO NOT KEEP WET FABRIC IN TWISTED FROM IN ORDER TO AVOID COPY MARKS |
WASH COLOURED AND WHITE FABRICS SEPARATELY
IRON CLOTHES AT MODERATE TEMPERATURE | DO NOT DRY FABRIC IN DIRECT SUNLIGHT
(EXTRA LACES, HANGINGS AND ACCESSORIES ARE NOT INDUDED)

D.NO.60013

Maria B
embroide-3




Shangrila
FABRICS
a boutique collection

6056










Shangrila
SAREES
a boutique collection

SHE CAN CREATE MAGIC WITH HER
UNMATCHED IMAGINATIONS!



6051

Get, set and go to revamp your wardrobe with a dash of golden spark and matchless designs this season.



6051



6052



6053



6054



6055



6056

SHE SYMBOLIZES STRENGTH,
PURITY, LOVE, AND CREATIVITY.




Shangrila
SAREES
antiqua collection


6054

