



Fepic®

Rosemeen®

IMAGE CHIKANKARI
COLLECTION

Fepic®



D.NO.46024

Epic



Rosemeen®

IMAGE CHIKANKARI
COLLECTION
D.NO.46023





Fepic[®]
Rosemeen[®]
IMAGE CHIKANKARI
COLLECTION
D.NO.46027

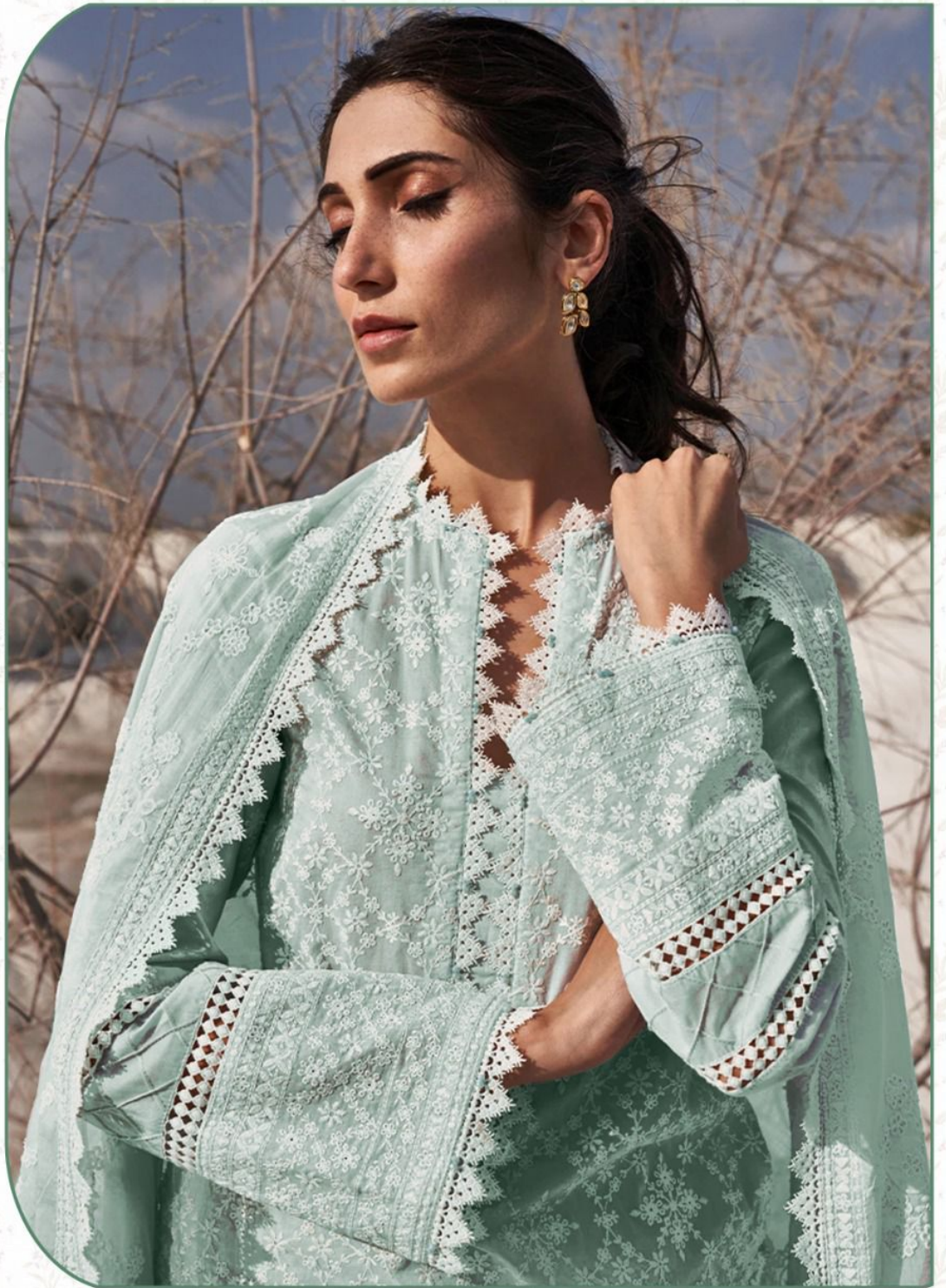


Fepic®

Rosemeen®

IMAGE CHIKANKARI
COLLECTION

D.NO.46021



Fepic®



WASHING INTRUCTIONS

DO NOT USE ANY TYPE OF BLEACH OR STAIN REMOVING CHEMICALS
BEFORE CUTTING / STITCHING, FABRIC SHOULD BE SOAKED BE SOAKED IN WATER
(ALL COMPONENTS SEPARATELY) FOR 15 MINUTES
DO NOT KEEP WET FABRIC IN TWISTED FROM IN ORDER TO AVOID COPY MARKS |
WASH COLOURED AND WHITE FABRICS SEPARATELY
IRON CLOTHES AT MODERATE TEMPERATURE | DO NOT DRY FABRIC IN DIRECT SUNLIGHT
(EXTRA LACES, HANGINGS AND ACCESSORIES ARE NOT INDUDED)

Rosemeen®

IMAGE CHIKANKARI
COLLECTION

D.NO.46021





Fepic®

Rosemeen®

IMAGE CHIKANKARI
COLLECTION

Fepic®



WASHING INTRUCTIONS

DO NOT USE ANY TYPE OF BLEACH OR STAIN REMOVING CHEMICALS
BEFORE CUTTING / STITCHING, FABRIC SHOULD BE SOAKED BE SOAKED IN WATER
(ALL COMPONENTS SEPARATELY) FOR 15 MINUTES
DO NOT KEEP WET FABRIC IN TWISTED FROM IN ORDER TO AVOID COPY MARKS |
WASH COLOURED AND WHITE FABRICS SEPARATELY
IRON CLOTHES AT MODERATE TEMPERATURE | DO NOT DRY FABRIC IN DIRECT SUNLIGHT
(EXTRA LACES, HANGINGS AND ACCESSORIES ARE NOT INDDUED)

Rosemeen®
IMAGE CHIKANKARI
COLLECTION
D.NO.46024



Fepic®



WASHING INTRUCTIONS

DO NOT USE ANY TYPE OF BLEACH OR STAIN REMOVING CHEMICALS
BEFORE CUTTING / STITCHING, FABRIC SHOULD BE SOAKED IN WATER
(ALL COMPONENTS SEPARATELY) FOR 15 MINUTES
DO NOT KEEP WET FABRIC IN TWISTED FROM IN ORDER TO AVOID COPY MARKS |
WASH COLOURED AND WHITE FABRICS SEPARATELY
IRON CLOTHES AT MODERATE TEMPERATURE | DO NOT DRY FABRIC IN DIRECT SUNLIGHT
(EXTRA LACES, HANGINGS AND ACCESSORIES ARE NOT INDDUED)

Rosemeen®

IMAGE CHIKANKARI
COLLECTION

D.NO.46026





D No
46021



D.NO.46021



D.NO.46022



D.NO.46023



D.NO.46024



D.NO.46025



D.NO.46026



D.NO.46027

Fepic®

Rosemeen®
IMAGE CHIKANKARI
COLLECTION

:_Fepic

:Fb.com/Fepic11



Fepic®



WASHING INSTRUCTIONS

DO NOT USE ANY TYPE OF BLEACH OR STAIN REMOVING CHEMICALS
BEFORE CUTTING / STITCHING, FABRIC SHOULD BE SOAKED BE SOAKED IN WATER
(ALL COMPONENTS SEPARATELY) FOR 15 MINUTES
DO NOT KEEP WET FABRIC IN TWISTED FROM IN ORDER TO AVOID COPY MARKS |
WASH COLOURED AND WHITE FABRICS SEPARATELY
IRON CLOTHES AT MODERATE TEMPERATURE | DO NOT DRY FABRIC IN DIRECT SUNLIGHT
(EXTRA LACES, HANGINGS AND ACCESSORIES ARE NOT INLUDED)

Rosemeen®

IMAGE CHIKANKARI
COLLECTION

D.NO.46025

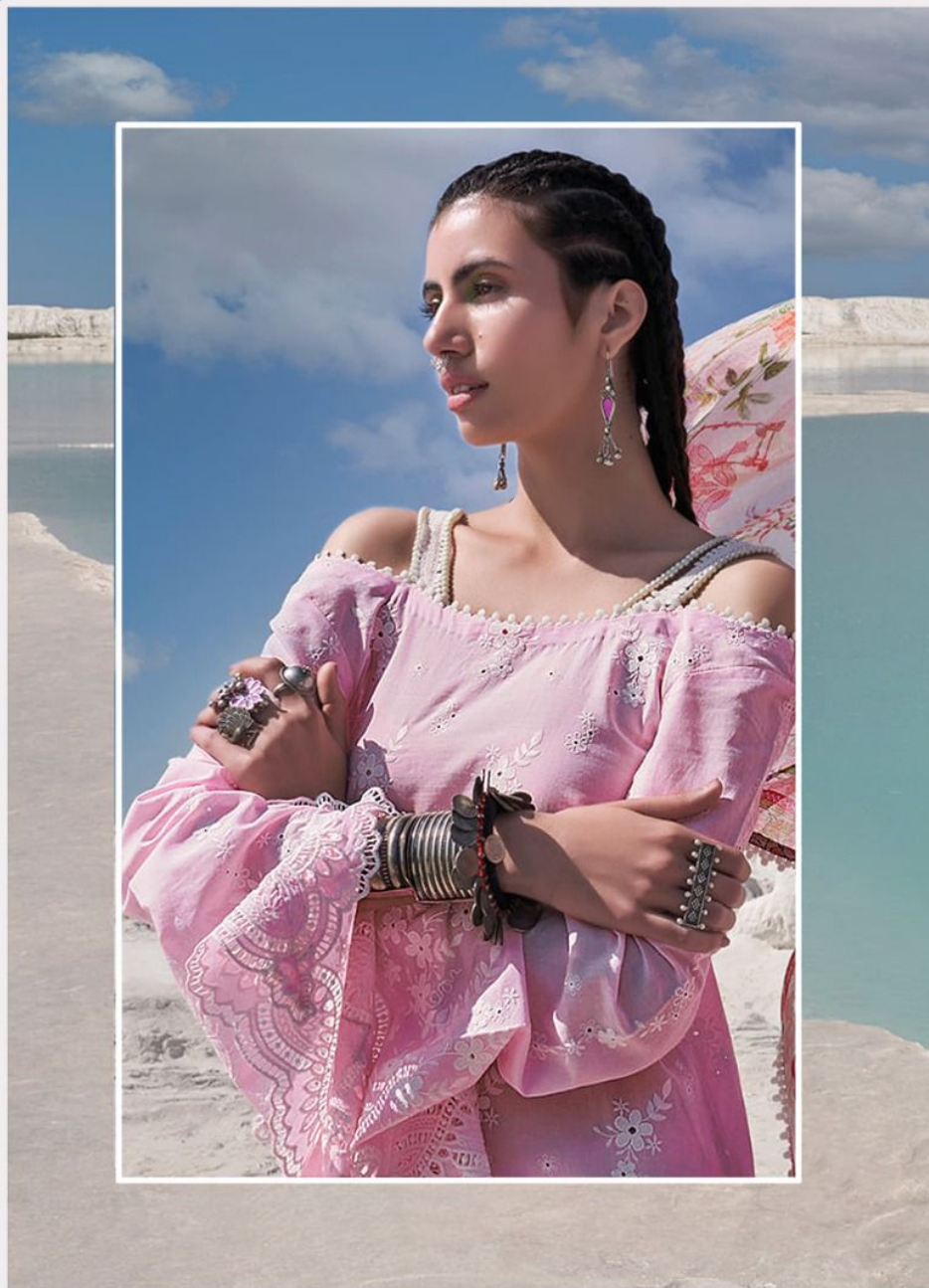


Fepic[®]

Rosemeen[®]

IMAGE CHIKANKARI
COLLECTION

D.NO.46025



Fepic®



WASHING INTRUCTIONS

DO NOT USE ANY TYPE OF BLEACH OR STAIN REMOVING CHEMICALS
BEFORE CUTTING / STITCHING, FABRIC SHOULD BE SOAKED BE SOAKED IN WATER
(ALL COMPONENTS SEPARATELY) FOR 15 MINUTES
DO NOT KEEP WET FABRIC IN TWISTED FROM IN ORDER TO AVOID COPY MARKS |
WASH COLOURED AND WHITE FABRICS SEPARATELY
IRON CLOTHES AT MODERATE TEMPERATURE | DO NOT DRY FABRIC IN DIRECT SUNLIGHT
(EXTRA LACES, HANGINGS AND ACCESSORIES ARE NOT INDUDED)

Rosemeen®

IMAGE CHIKANKARI
COLLECTION

D.NO.46022



Fepic®



WASHING INSTRUCTIONS

DO NOT USE ANY TYPE OF BLEACH OR STAIN REMOVING CHEMICALS
BEFORE CUTTING / STITCHING, FABRIC SHOULD BE SOAKED IN WATER
(ALL COMPONENTS SEPARATELY) FOR 15 MINUTES
DO NOT KEEP WET FABRIC IN TWISTED FORM IN ORDER TO AVOID COPY MARKS |
WASH COLOURED AND WHITE FABRICS SEPARATELY
IRON CLOTHES AT MODERATE TEMPERATURE | DO NOT DRY FABRIC IN DIRECT SUNLIGHT
(EXTRA LACES, HANGINGS AND ACCESSORIES ARE NOT INCLUDED)

Rosemeen®

IMAGE CHIKANKARI
COLLECTION

D.NO.46023



Fepic®



WASHING INTRUCTIONS

DO NOT USE ANY TYPE OF BLEACH OR STAIN REMOVING CHEMICALS
BEFORE CUTTING / STITCHING. FABRIC SHOULD BE SOAKED IN WATER
(ALL COMPONENTS SEPARATELY) FOR 15 MINUTES
DO NOT KEEP WET FABRIC IN TWISTED FROM IN ORDER TO AVOID COPY MARKS |
WASH COLOURED AND WHITE FABRICS SEPARATELY
IRON CLOTHES AT MODERATE TEMPERATURE | DO NOT DRY FABRIC IN DIRECT SUNLIGHT
(EXTRA LACES, HANGINGS AND ACCESSORIES ARE NOT INDUDED)

Rosemeen®

IMAGE CHIKANKARI
COLLECTION

D.NO.46027



Epic[®]

Rosemeen[®]

IMAGE CHIKANKARI
COLLECTION

D.NO.46026

