



*Adorned in beige, she exudes an enchanting thriving life's subtle tones.  
This attire pays homage to enduring beauty that thrives in understatement.*



Fabric: Silk Crepe Satin  
Accessories: Belt, Reddy Blouse

23304

Amidst this palette of calm blue, her beauty emanates an electrifying allure,  
creating a mesmerizing blend of serene poise and exhilarating charm.



.....  
Fabric: Satin Silk Crape  
Accessories: Belt, Redy Blouse, Jacket  
.....  
23302



## -----RUSTIC BLUSH APPEAL-----

*With a blend of peach pink and mud-baked hues that embodies natural charm,  
this attire mirrors a woman's timeless beauty.*

.....  
Fabric: Silk Crepe Satin  
Accessories: Belt, Reddy Blouse  
.....

23308



MOHMANTHAN™

*Royal*



MAHOTSAV®  
GROUP



Enigma



Step into elegance with the Burgundy Maroon Saree, where shades of maroon make you a woman with an aura of poise and allure with capturing spirit.



Fabric: Silk Crepe Satin  
Accessories: Belt, Reddy Blouse

23310

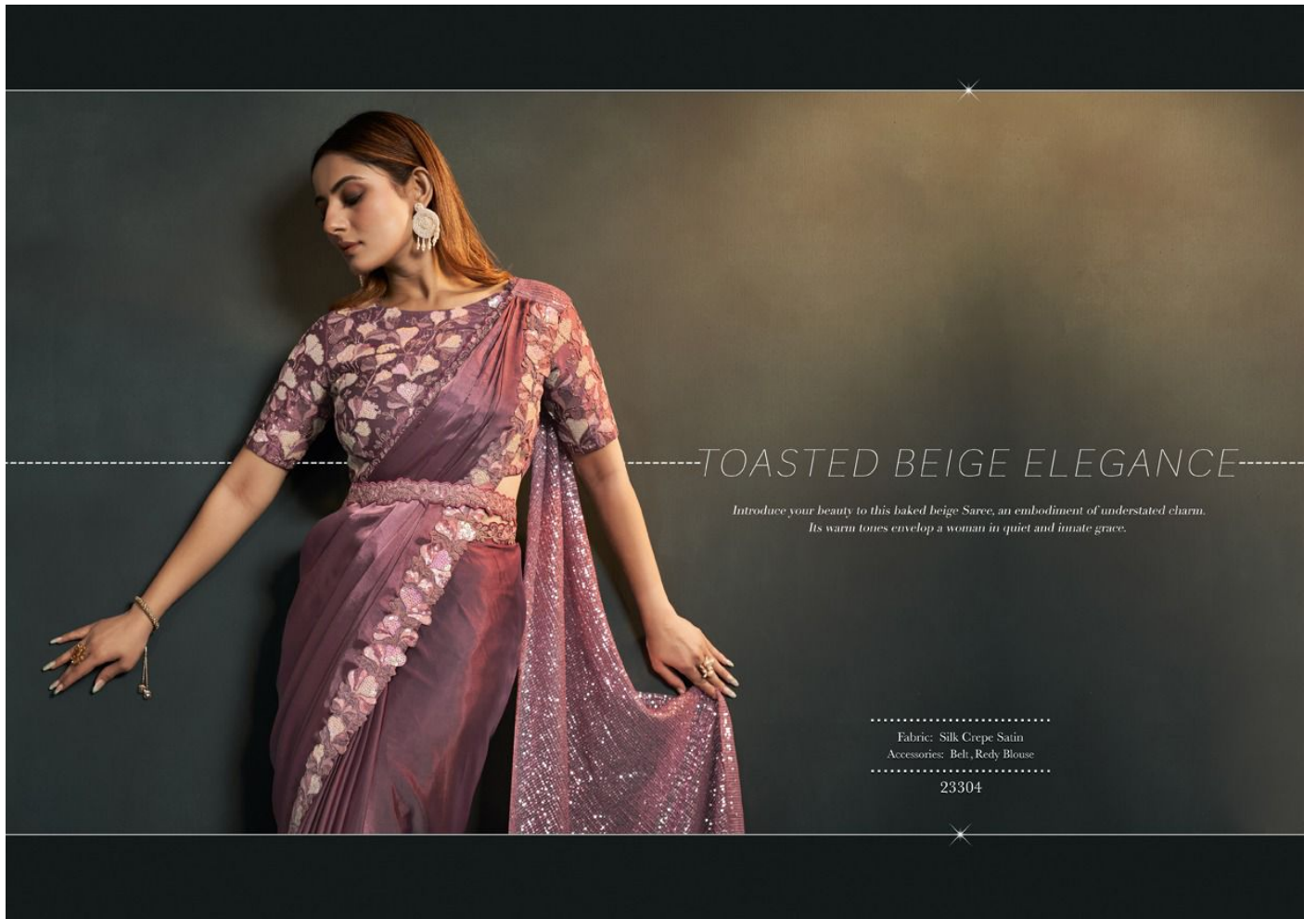


*Capture the desires with the fusion of pink and baked mud shades that reflects a woman's ageless grace, echoing the earthy elegance inherent in neutral tones.*



Fabric: Silk Crepe Satin  
Accessories: Belt, Reddy Blouse

23308



## -----TOASTED BEIGE ELEGANCE-----

*Introduce your beauty to this baked beige Saree, an embodiment of understated charm.  
Its warm tones envelop a woman in quiet and innate grace.*

.....  
Fabric: Silk Crepe Satin  
Accessories: Belt, Redy Blouse  
.....

23304



## GLISTENING MOONLIGHT ELEGANCE-----

*With the ethereal charm of moonlit nights, this attire encapsulates a woman's magnetic elegance through shades that echo the moon's soft glow.*

Multi-Purpose Saree



Fabric: Pattern Jari Georgette  
Accessories: Belt, Redy Blouse, Jacket

23309





23301



23302



23303



23304



23309



23310



23311



23305



23306



23307



23308



23312



23313



MOHMANTHAN™



MAHOTSAV  
GROUP

## RADIANT YELLOW GLAMOUR

*A Radiating yellow with deep illuminate hues of elegance, this saree envelops a woman in golden warmth, reflecting her inner glow.*



Fabric: Organza Silk Crepe  
Accessories: Belt, Reddy Blouse

23311

VIVID SPECTRUM GLAMOUR



Wrap your grace in this Spectrum-Inspired Saree, a canvas of multiple hues that mirror a woman's vibrant beauty.



Fabric: Silk Crepe Georgette

Accessories: Belt, Rody Blouse

23303

DESIGN NO	SAREE FABRIC	BLOUSE FABRIC	Saree WORK	Belt	CUSTZ.(SEMISTITCH/UN-STITCH)	BLOUSE SIZE
23301	Silk Crepe Georgette	Japan Crepe	Cord Sequence & Thread Embroidered & Stone Work	Available	stitched Blouse	up to 38 Inch with margin of 42 inch
23302	Satin Silk Crepe	Banglari Silk	Cord Sequence & Thread Embroidered & Stone Work	Available	stitched Blouse	up to 38 Inch with margin of 42 inch
23303	Silk Crepe Georgette	Organza Silk	Cord Sequence & Thread Embroidered & Moti Work	Available	stitched Blouse	up to 38 Inch with margin of 42 inch
23304	Silk Satin Crepe	Japan Crepe	Cord Sequence & Thread Embroidered & Moti Work	Available	stitched Blouse	up to 38 Inch with margin of 42 inch
23305	Silk Crepe Satin	Organza Silk	Cord Sequence & Thread Embroidered & Stone Work	Available	stitched Blouse	up to 38 Inch with margin of 42 inch
23306	Silk Crepe Georgette	Organza Silk	Cord Sequence & Thread Embroidered & Stone Work	Available	stitched Blouse	up to 38 Inch with margin of 42 inch
23307	Silk Crepe Satin	Malai Satin	Cord Sequence & Thread Embroidered & Stone Work	Available	stitched Blouse	up to 38 Inch with margin of 42 inch
23308	Silk Crepe Satin	Malai Satin	Cord Sequence & Thread Embroidered & Stone Work	Available	stitched Blouse	up to 38 Inch with margin of 42 inch
23309	Pattern Jari Georgette	Banglari Silk	Cord Sequence & Thread Embroidered & Stone Work	Available	stitched Blouse	up to 38 Inch with margin of 42 inch
23310	Silk Crepe Satin	Japan Crepe	Cord Sequence & Thread Embroidered	Available	stitched Blouse	up to 38 Inch with margin of 42 inch
23311	Organza Silk Crepe	Organza Silk	Cord Sequence & Thread Embroidered & Stone Work	Available	stitched Blouse	up to 38 Inch with margin of 42 inch
23312	Satin Silk Crepe	Organza Silk	Cord Sequence & Thread Embroidered & Stone Work	Available	stitched Blouse	up to 38 Inch with margin of 42 inch
23313	Organza Silk Crepe	Organza Silk	Cord Sequence & Thread Embroidered & Stone Work	Available	stitched Blouse	up to 38 Inch with margin of 42 inch



A CASCADE OF LIGHT  
BROWNS WITH EARTHY HUES

*Radiant as a summer sunrise, this elegant saree intertwines chocolate-light brown shades with baked earthy harmonious fusion of nature-inspired style.*



Fabric: Silk Crepe Georgette  
Accessories: Belt, Reddy Blouse

23301



*A flawless gentle light colour that embodies understated sophistication. This saree celebrates the allure that exudes subdued strength, presenting an unfolding vision woven in fabric.*



.....  
Fabric: Silk Crepe Georgette  
Accessories: Belt, Redy Blouse, Jacket  
.....  
23306



## EBONY-PURPLE FUSION

*Affectionately, this Mauve Noir Saree, where the fusion of purple and black embodies enigmatic elegance, captures the essence of a woman's multi-faceted charm.*

Fabric: Silk Crepe Satin  
Accessories: Belt, Rody Blouse

23307

A silver tone capture the mystique of moonlit serenity, portraying a charm that weaves an enchanting narrative, where each drape tells a story of serene confidence.



Fabric: Pattern Jari Georgette  
Accessories: Belt, Redy Blouse, Jacket

23309



-----CHARISMATIC STERLING GREY-----

*With each fold, you capture a different shade, symbolizing a testament to her elegance,  
where colours blend in harmony.*



.....  
Fabric: Silk Crape Satin  
Accessories: Belt, Reddy Blouse  
.....

23305

With a touch of mesmerizing darkness, the drapes tell a story of mystery and  
sophistication, with sensuality of Silk Crepe Satin in Ebony.



Fabric: Silk Crepe Satin  
Accessories: Belt, Rody Blouse  
23307

★ ---DEEP MAROON BURGUNDY ECHOES--- ★

*Get a weaving tapestry, which embraces a woman's essence with  
the richness of maroon, reflecting her strength and grace.*

.....  
Fabric: Silk Crepe Satin  
Accessories: Belt, Redy Blouse  
.....

23310







MOHMANTHAN™

*Royal*



MAHOTSAV®  
GROUP



Enigma





Enter a realm of elegance with this Radiant Yellow Saree, where golden hues ignite a sense of splendor.



Fabric: Organza Silk Crepe  
Accessories: Belt, Reddy Blouse

23311

## VIBRANT BLUE CHARM

Experience tranquility with the Vibrant Blue Saree, where cool blue tones evoke serene emotions.



TM  
FUSION SAREE

Fabric: Satin Silk Crape  
Accessories: Belt, Reddy Blouse, Jacket

23302