











HOOR TEX



OR-23-C

**TOP- DULL ORGANZA WITH HEAVY EMBROIDERY**

**BOTTOM/INNER- SANTOON**

**DUPATTA/NET- ORGANZA WITH WORK WITH 4 SIDE CUT WORK LACE**

☐ DRY CLEAN ONLY.

✘ DO NOT USE ANY BLEACH OR STAIN REMOVING CHEMICAL.

☐ IRON THE FABRIC AT MODERATE TEMPERATURE.



OR-23 A



OR-23 B



OR-23 C



HOOR TEX





OR-23 A



OR-23 B



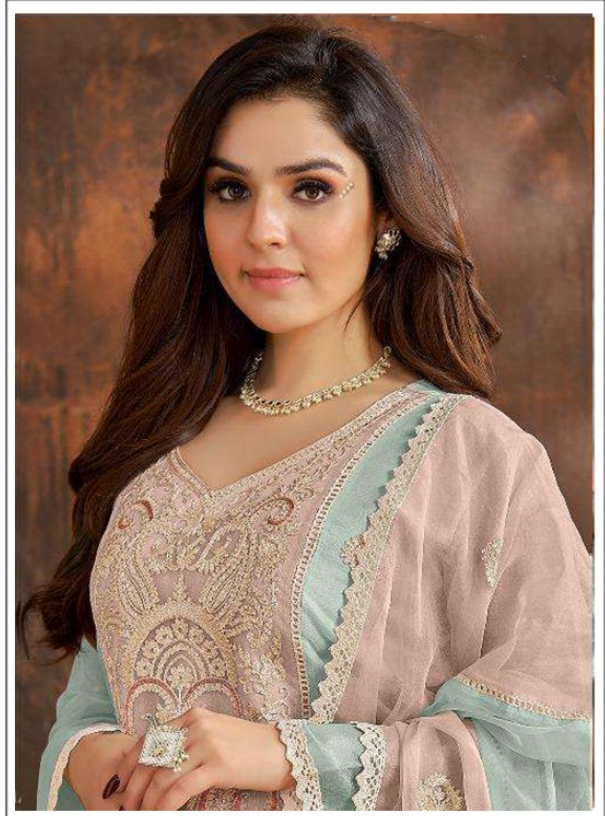
OR-23 C



HOOR TEX



HOOR TEX



OR-23-B

**TOP- DULL ORGANZA WITH HEAVY EMBROIDERY**

**BOTTOM/INNER- SANTOON**

**DUPATTA/NET- ORGANZA WITH WORK WITH 4 SIDE CUT WORK LACE**

☐ DRY CLEAN ONLY.

✂ DO NOT USE ANY BLEACH OR STAIN REMOVING CHEMICAL.

☐ IRON THE FABRIC AT MODERATE TEMPERATURE.

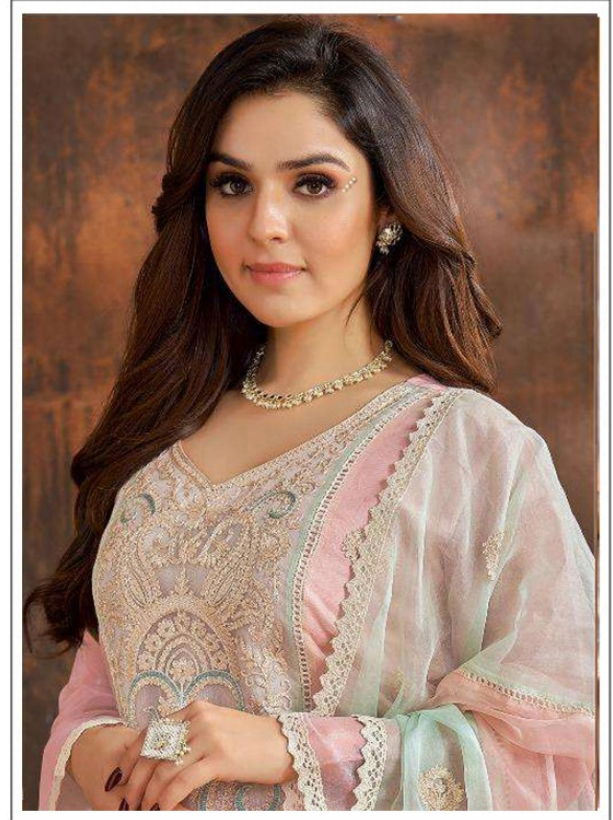








HOOR TEX



OR-23-A

**TOP- DULL ORGANZA WITH HEAVY EMBROIDERY**

**BOTTOM/INNER- SANTOON**

**DUPATTA/NET- ORGANZA WITH WORK WITH 4 SIDE CUT WORK LACE**

☐ DRY CLEAN ONLY.

✂ DO NOT USE ANY BLEACH OR STAIN REMOVING CHEMICAL.

☐ IRON THE FABRIC AT MODERATE TEMPERATURE.